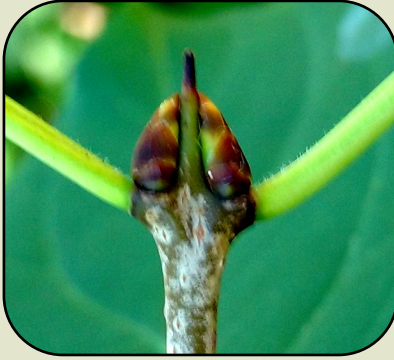


# BUCKTHORN IDENTIFICATION

## COMMON BUCKTHORN (*Rhamnus cathartica*)



- Found in upland environments
- Twigs often have thorns at their tips
- Leaves pointed at the tip, toothed, prominent veins

- Light yellowish green flowers
- Berry-like fruits ripen from green to dark purple, with 3-4 seeds
- Bark has light raised spots, inner bark is orange

## GLOSSY BUCKTHORN (*Frangula alnus*)



- Found in wetland environments
- Twigs do not have thorns
- Rust colored terminal bud
- Leaves are oval, glossy, toothless edges

- Light yellowish green flowers
- Berry-like fruits ripen from green to red to dark purple, with 2-3 seeds
- Bark has light raised spots

## NATIVE LOOK-ALIKES

### BLACK CHERRY (*Prunus serotina*)



- Narrow, long and smooth leaf
- Flowers and fruits in long raceme
- Older bark is cracked vs. peeled

### CHOKO CHERRY (*Prunus virginiana*)



- Leaves pointed at tip, finely toothed
- Flowers and fruits in long raceme
- Smooth bark with light raised spots



# BUCKTHORN CONTROL

## CONTROLLING LARGE BUCKTHORN

- Cut close to the ground with saw, chain saw or brush cutter. Treat stump immediately after cutting with herbicide containing triclopyr or glyphosate. Fall and winter application are most effective.

## CONTROLLING SEEDLINGS OR SMALL BUCKTHORN (less than 3 inches in diameter)

- Pull entire plant or use weed wrench to uproot. Be careful to minimize soil disturbance.
- Spray foliage of short buckthorn or seedlings with a low concentration of herbicide during the spring or fall.
- Basal bark treatment: Apply herbicide to the bark of buckthorn around the entire trunk, from root collar up to 12 inches. Apply during the fall or winter. Leave buckthorn standing.
- Cut and stump spray similar to large buckthorn control. Avoid getting any herbicide on the ground.



Apply herbicide to the outer ring of living cambium.



Basal bark spray around the entire trunk of the tree.



Use a 'kill stick' for basal bark or stump treatment.



Brush saw can be used to cut small diameter buckthorn.

## HERBICIDES TO CONTROL BUCKTHORN

Chemical Name	Trade Name	Concentration	Use
Triclopyr ester	Garlon 4*	15% active ingredient. 25% solution. One part Garlon 4 with 3 parts bark oil or diesel.	Cut stump or basal bark
Glyphosate	Roundup* Rodeo	25% active ingredient. If using concentrate, mix 1 part water with 1 part herbicide.	Cut stump
Glyphosate	Roundup* Rodeo*	2—5% active ingredient. If using concentrate, mix 1:50 to 1:20 herbicide:water ratio.	Foliar

\* Always follow herbicide labels. Do not apply Garlon 4 or Roundup directly into water. Rodeo is safe to use near water.