

THOMPSON RESIDENCE

Rain Garden



Pre-Rain Garden Conditions

Rain falling on the roof of the Thompson residence flowed into the street, eventually making its way to the Mississippi River via the storm sewer system. This excess runoff from impervious surfaces can cause:

- An increased risk of flooding and bank erosion
- An influx of sediments, nutrients and pollutants
- An increase in water temperatures.

PROJECT SPECS

Date Planted June 2004

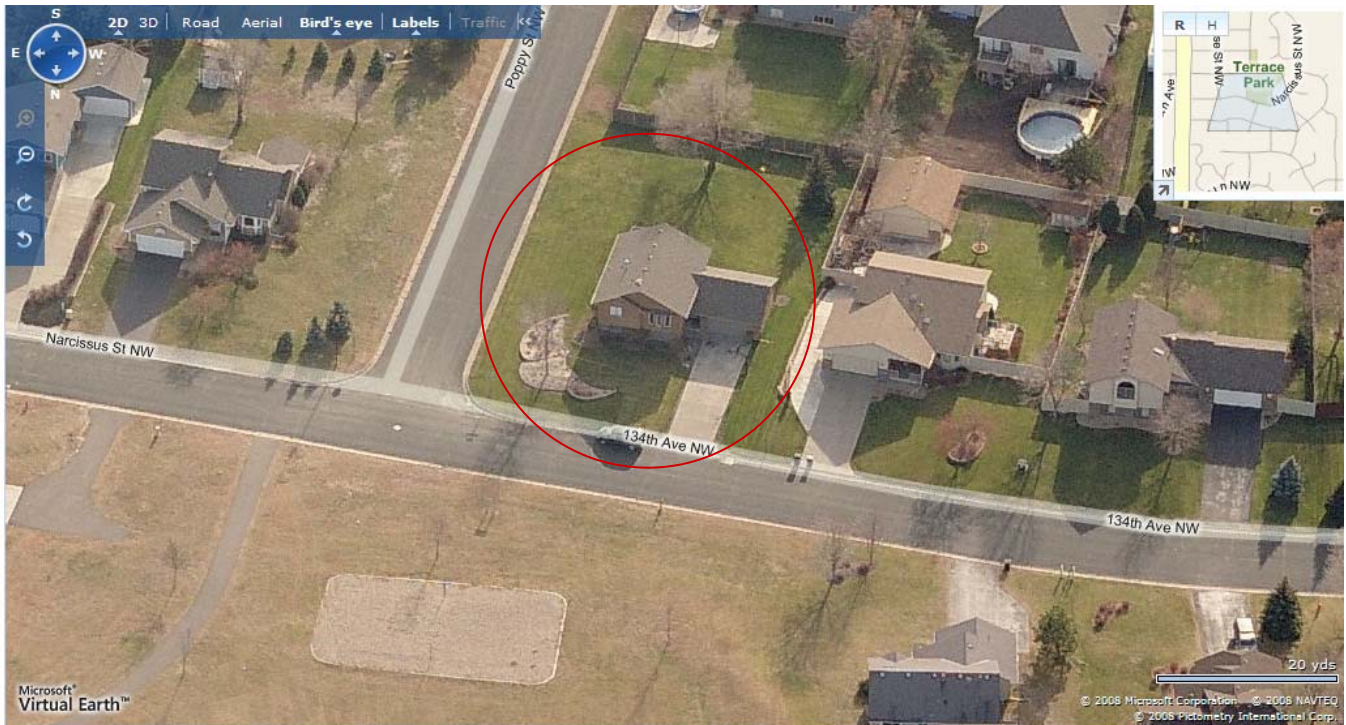
Rain Gardens Installed..... 1

Water Treatment Capacity 106 ft³

Water Detention Capacity 49 ft³

Estimated Homeowner Labor \$1,050.00

Cost-share Funds Provided \$1,358.08



Before Rain Garden Installation



July 2003



Rain falling on the roof flows into the street where it entered the storm sewer system.

After Rain Garden Installation



September 2004



Rainwater is directed to the rain garden where it is treated, reducing nutrient and pollution input to the Mississippi River.